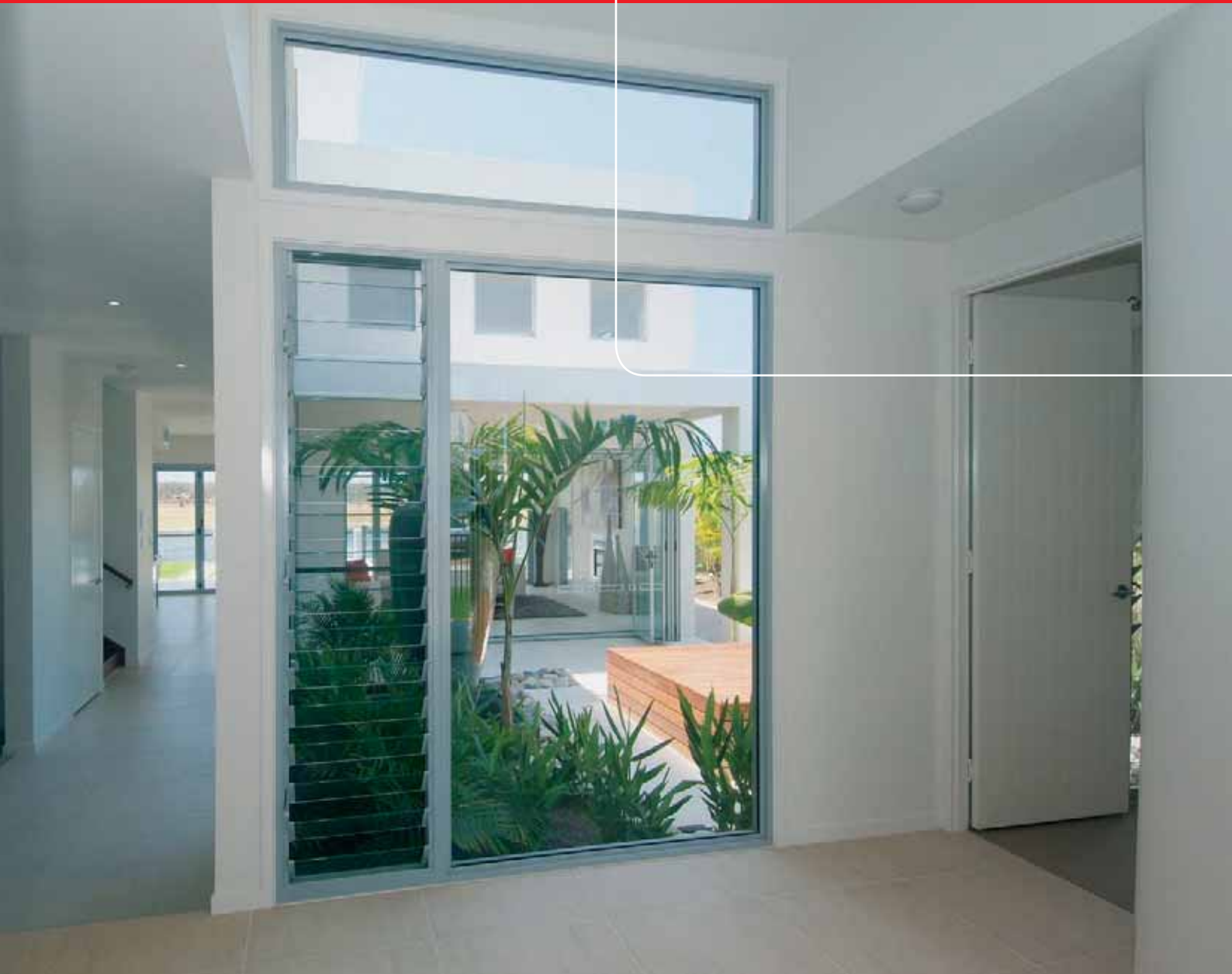


essentials

fixed lights,  
rakes, arches

bradnams enhanced living



**STATESMAN**  
**WINDOWS**

A part of Stateman's **Essentials** range of windows and doors



**Fixed windows** are stationary windows often used to compliment other window and door suites. Stateman's fixed windows allow you to incorporate maximum natural light, without compromising your design or view.

Windows of unusual shapes and sizes are nothing out of the ordinary for Stateman's. Curved, raked, arched, faceted, stepped and decorative window shapes along with curved glass and glass blocks are all available to suit any architectural style.

All Stateman's windows and doors are made to architectural specifications allowing your individual tastes to show through.

select window with a high performance option

## features and benefits

- Architectural features provide design flexibility and versatility to suit most applications and personal tastes
- Fixed windows maximise views
- Designed to match aesthetics of all Stateman's products
- Full joint sealing maximises weather proofing performance
- 52mm, 100mm or 125mm width aluminium frames
- Unique design opportunities to suit all architectural styles
- Powder coated aluminium frames for durability
- Tested to Australian Standards
- 7 Year Warranty

## applications

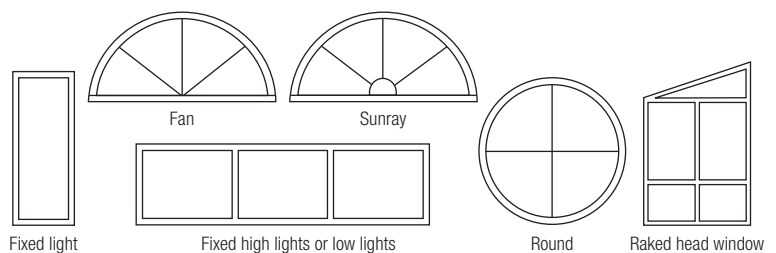
- Residential construction
- Renovation
- Low-rise buildings
- High-rise

### note

Products may be subject to local variation or climate requirements

## options

- Colonial, Federation or custom bars
- Variety of colours
- Glass options – Suitable for thicker glass panes up to 25mm
- Energy efficient / High performance system options
- Compatible with other Stateman's products



Choosing the right energy efficient product is made easy with Stateman's online do-it-yourself **5 STAR WADS™** (Window and Door Selector). [www.states.com.au](http://www.states.com.au) and follow the Bradnam's link.



**Solar Block™** is ideally suited to locations where keeping out heat, glare and damaging UV rays are a priority. Just like having sunglasses on your home.



**Solar Comfort™** is the perfect choice for keeping comfortable temperatures all year round, despite the outside extremes. Spend less on heating and cooling your home and help the environment.



**Sound Smart™** is a system that reduces external noise. By simply installing the right window and door system, you can 'turn down' the sound to far more comfortable levels.



**Solar Secure™** is approximately 20 times harder to break through than ordinary glass, making it an ideal invisible and economical home security barrier.



**Solar Sound n Secure™** offers comfort, safety and acoustic high performance in one window. Ideal for residential, high rise and commercial applications.

essentials

sliding  
windows

bradnams enhanced living



**STATESMAN**  
**WINDOWS**

A part of Stateman's **Essentials** range of windows and doors





Stateman's **sliding windows** combine wide views, with simple, classic design and easy operation.

Sliding windows have at least one sash sliding horizontally providing fully adjustable ventilation for greater energy efficiency and comfort. The low force sliding system provides a smooth and quiet operation that requires little maintenance.

The sliding window is a reliable choice for design flexibility and can be combined with fixed panels. Sliding windows can be used to enhance a building's characteristics with a simple, economical design.

## select window with a high performance option

## features and benefits

- Low force sliding system for ease of use
- Full joint sealing maximises weather proofing performance
- Optional keyed vent lock allows the window to be left partially open enabling ventilation while ensuring security
- Powder coated aluminium frames for a durable finish
- Optional integrated safety and insect screens. Screens can be accessed internally – Ideal for two storey constructions
- Clear sight lines with concealed rails
- Tested to Australian Standards
- 7 Year Warranty

## applications

- Residential Construction
- Renovation
- Low-rise buildings
- Range of sizes from large feature windows to small bathroom windows

### note

Products may be subject to local variation or climate requirements

## options

- Colonial, Federation or custom bars
- Variety of colours
- Glass options – Suitable for thicker glass panes to suit thermal and acoustic applications
- Range of sill options for higher water and wind performance applications
- Aluminium framed safety and insect security screens
- Energy efficient / High performance system options
- Compatible with other Stateman's window products

Choosing the right energy efficient product is made easy with Stateman's online do-it-yourself **5 STAR WADS™** (Window and Door Selector). [www.states.com.au](http://www.states.com.au) and follow the Bradnam's link.



**Solar Block™** is ideally suited to locations where keeping out heat, glare and damaging UV rays are a priority. Just like having sunglasses on your home.



**Solar Comfort™** is the perfect choice for keeping comfortable temperatures all year round, despite the outside extremes. Spend less on heating and cooling your home and help the environment.



**Sound Smart™** is a system that reduces external noise. By simply installing the right window and door system, you can 'turn down' the sound to far more comfortable levels.



**Solar Secure™** is approximately 20 times harder to break through than ordinary glass, making it an ideal invisible and economical home security barrier.

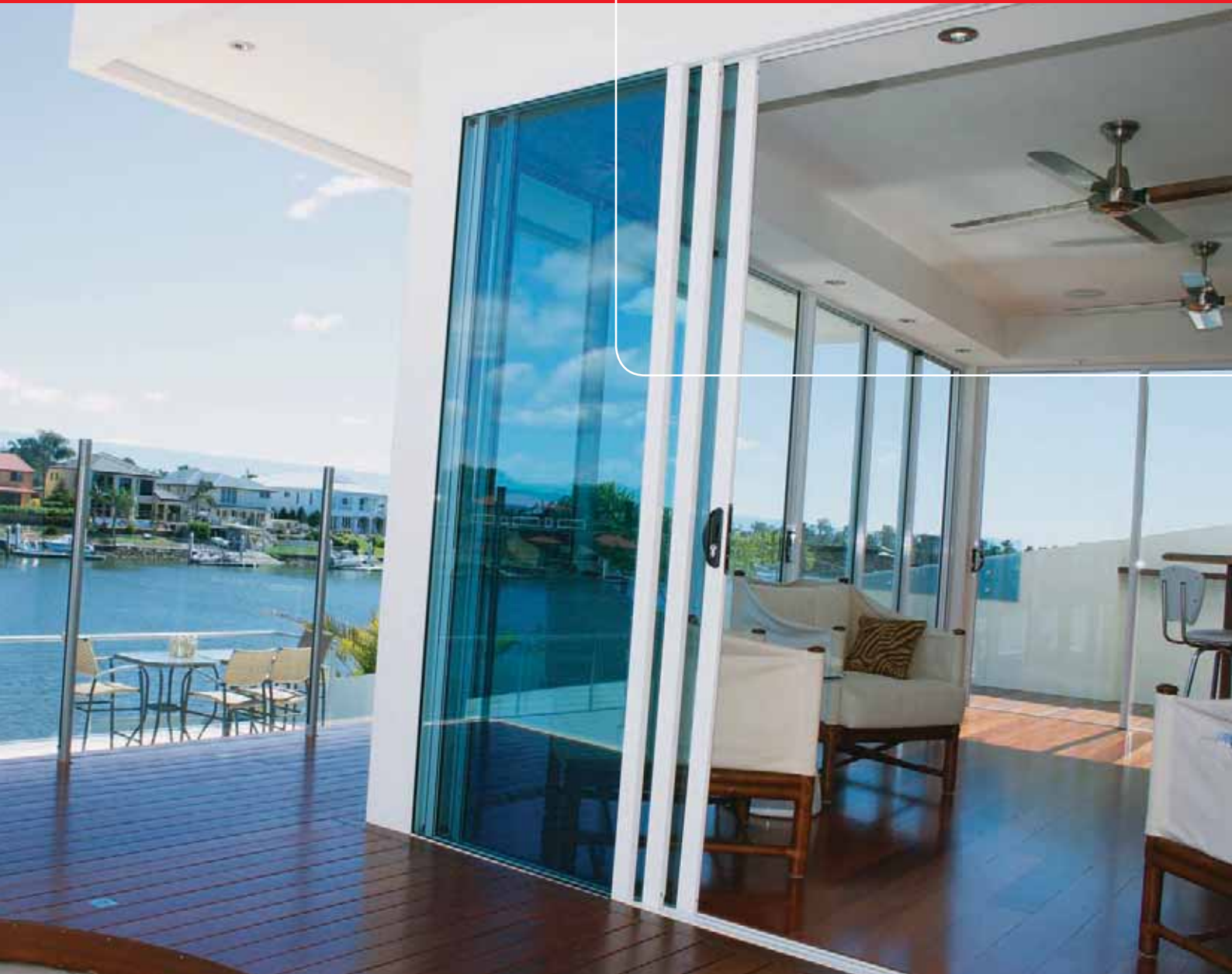


**Solar Sound n Secure™** offers comfort, safety and acoustic high performance in one window. Ideal for residential, high rise and commercial applications.

essentials

sliding and  
stacker doors

bradnams enhanced living



**STATESMAN**  
**WINDOWS**

A part of Stateman's **Essentials** range of windows and doors



Frame your view perfectly with the bold, clean lines of Stateman's **sliding and stacker doors**.

Sliding and stacker doors are available in most aesthetic styles, configurations and colours to suit any design application.

With a wide range of stacking configurations the stacker door is suitable for most design applications.

The Stateman's sliding and stacker door allows an extension of the indoor and outdoor living areas.

select door with a  
high performance option

## features and benefits

- Heavy duty 100mm width frame for added strength and durability
- Full joint sealing maximises weather proofing performance
- Full locking options, as well as an internal sliding sash, increases security and safety
- Safety and insect screens can be easily fitted to the outside
- Optional accessibility sill for wheelchair access
- Powder coated aluminium frames for durability
- Clear sight lines with concealed rails
- Tested to Australian Standards
- 7 Year Warranty

## applications

- Residential construction
- Renovation
- Low-rise buildings
- High-rise / Unit Complexes

### note

Products may be subject to local variation or climate requirements

## options

- Colonial, Federation or custom bars
- Variety of colours
- Glass options – Suitable up to 13.76mm laminated glass and double glazing options
- Accessibility sill (Wheelchair access)
- Aluminium framed safety, insect and security screens
- Energy efficient / High performance system options
- Compatible with other Stateman's window products

Choosing the right energy efficient product is made easy with Stateman's online do-it-yourself **5 STAR WADS™** (Window and Door Selector). [www.states.com.au](http://www.states.com.au) and follow the Bradnam's link.



**Solar Block™** is ideally suited to locations where keeping out heat, glare and damaging UV rays are a priority. Just like having sunglasses on your home.



**Solar Comfort™** is the perfect choice for keeping comfortable temperatures all year round, despite the outside extremes. Spend less on heating and cooling your home and help the environment.



**Sound Smart™** is a system that reduces external noise. By simply installing the right window and door system, you can 'turn down' the sound to far more comfortable levels.



**Solar Secure™** is approximately 20 times harder to break through than ordinary glass, making it an ideal invisible and economical home security barrier.



**Solar Sound n Secure™** offers comfort, safety and acoustic high performance in one window. Ideal for residential, high rise and commercial applications.

enhanced living



essentials

double hung  
windows

bradnams enhanced living



**STATESMAN**  
**WINDOWS**

A part of Stateman's **Essentials** range of windows and doors



With an adjustable top and bottom hung sash, Stateman's **double hung window** provides superior climate control performance, allowing you to direct air through the top, bottom, or both sashes together.

The double hung window is also available with one fixed sash providing extra security and safety if required.

Thanks to the innovative smooth action balance system, Stateman's double hung windows open and close effortlessly.

select window with a  
high performance option

## features and benefits

- Non-projecting sash window safeguards pedestrians on walkways
- Engineered sash balances for trouble-free ease of operation
- Conveniently located screws for adjustment of sash tension
- Full joint sealing maximises weather proofing performance
- Optional die cast zinc cam locks for increased security and safety
- Safety and insect screens can be easily fitted to the outside
- Adjustable top and bottom hung sash for improved ventilation and climate control
- Powder coated aluminium frames for strength and durability
- Tested to Australian Standards
- 7 Year Warranty

## applications

- Residential construction
- Renovation
- Low-rise buildings
- Bay windows

### note

Products may be subject to local variation or climate requirements

## options

- Colonial, Federation or custom bars
- Variety of colours
- Glass options – Suitable up to 6.76mm laminated glass
- Aluminium framed safety and insect screens
- Energy efficient / High performance system options
- Compatible with other Stateman's products

Choosing the right energy efficient product is made easy with Stateman's online do-it-yourself **5 STAR WADS™** (Window and Door Selector). [www.states.com.au](http://www.states.com.au) and follow the Bradnam's link.



**Solar Block™** is ideally suited to locations where keeping out heat, glare and damaging UV rays are a priority. Just like having sunglasses on your home.



**Solar Comfort™** is the perfect choice for keeping comfortable temperatures all year round, despite the outside extremes. Spend less on heating and cooling your home and help the environment.



**Sound Smart™** is a system that reduces external noise. By simply installing the right window and door system, you can 'turn down' the sound to far more comfortable levels.



**Solar Secure™** is approximately 20 times harder to break through than ordinary glass, making it an ideal invisible and economical home security barrier.



**Solar Sound n Secure™** offers comfort, safety and acoustic high performance in one window. Ideal for residential, high rise and commercial applications.

enhanced living



essentials

casement  
windows

bradnams enhanced living



**STATESMAN**  
**WINDOWS**

A part of Stateman's **Essentials** range of windows and doors



**Casement windows** are ideal for use with fixed windows and provide a stylish option to suit the traditional or contemporary home.

Casement windows can swing open up to 90° (like a door) to provide superior ventilation, while the large glass areas provide unobstructed views and bathe your rooms in natural light.

## features and benefits

- Casement windows can be proportioned to almost any dimension, allowing them to stand alone or be combined horizontally
- Modern slimline design
- Traditional solid sash giving heritage appearance
- Full joint sealing maximises weather proofing performance
- Limited opening capability for multi storey applications
- High rating for energy performance due to superior sealing action
- Powder coated aluminium frames for strength and durability
- Tested to Australian Standards
- 7 Year Warranty

## applications

- Residential construction
- Renovation
- Window walls

### note

Products may be subject to local variation or climate requirements

## options

- Colonial, Federation or custom bars
- Variety of colours
- Aluminium framed safety and insect security screens
- Integrated screening does not interfere with winder
- Energy efficient / High performance system options
- Compatible with other Stateman's products

select window with a  
high performance option

Choosing the right energy efficient product is made easy with Stateman's online do-it-yourself **5 STAR WADS™** (Window and Door Selector). [www.states.com.au](http://www.states.com.au) and follow the Bradnam's link.



**Solar Block™** is ideally suited to locations where keeping out heat, glare and damaging UV rays are a priority. Just like having sunglasses on your home.



**Solar Comfort™** is the perfect choice for keeping comfortable temperatures all year round, despite the outside extremes. Spend less on heating and cooling your home and help the environment.



**Sound Smart™** is a system that reduces external noise. By simply installing the right window and door system, you can 'turn down' the sound to far more comfortable levels.



**Solar Secure™** is approximately 20 times harder to break through than ordinary glass, making it an ideal invisible and economical home security barrier.



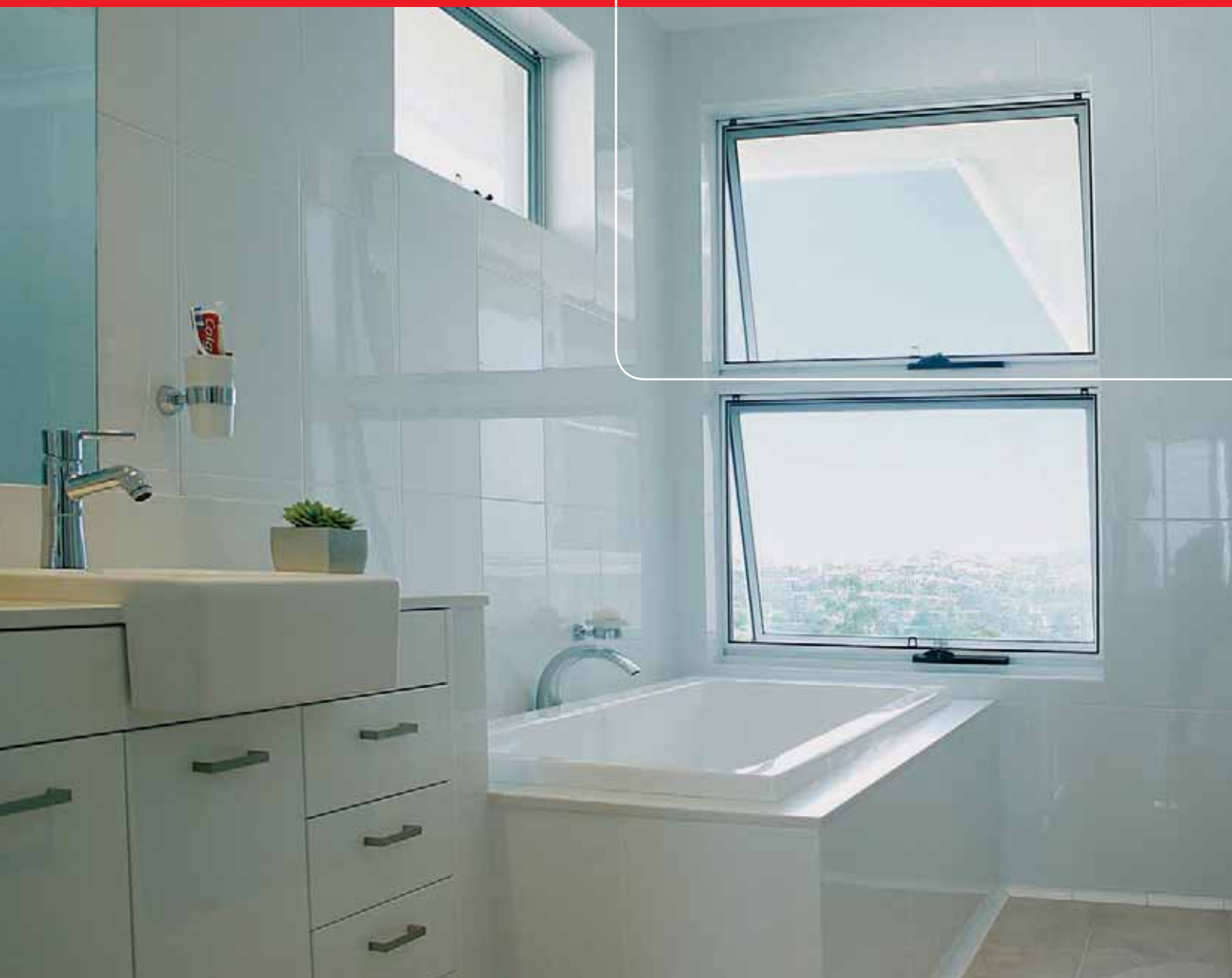
**Solar Sound n Secure™** offers comfort, safety and acoustic high performance in one window. Ideal for residential, high rise and commercial applications.

enhanced living

essentials

awning  
windows

bradnams enhanced living



**STATESMAN**  
**WINDOWS**

A part of Stateman's **Essentials** range of windows and doors





**Awning windows** are ideal for use with fixed windows and provide a stylish option to suit the traditional or contemporary home.

Awning windows are hinged from the top opening outward, letting air circulate freely. Tending to operate in reverse, the awning lets out more air than it lets in, which makes it perfect for kitchen and bathroom applications.

## features and benefits

- Awning windows can be proportioned to almost any dimension, allowing them to stand alone, stack vertically or be combined horizontally
- Modern slimline design
- Optional lockable gear winder prevents window closing in high winds and offers added security
- Traditional solid sash giving heritage appearance
- Full joint sealing maximises weather proofing performance
- Limited opening capability for multi storey applications
- High rating for energy performance due to superior sealing action
- Powder coated aluminium frames for strength and durability
- Tested to Australian Standards
- 7 Year Warranty

## applications

- Residential construction
- Renovation
- Low-rise buildings
- High-rise
- Window walls

### note

Products may be subject to local variation or climate requirements

## options

- Colonial, Federation or custom bars
- Variety of colours
- Glass options – Suitable for thicker glass panes up to 25mm insulated glass units (double glazing) for thermal and acoustic applications
- Aluminium framed safety and insect security screens
- Integrated screening does not interfere with winder
- Energy efficient / High performance system options
- Compatible with other Stateman's products

select window with a  
high performance option

Choosing the right energy efficient product is made easy with Stateman's online do-it-yourself **5 STAR WADS™** (Window and Door Selector). [www.states.com.au](http://www.states.com.au) and follow the Bradnam's link.



**Solar Block™** is ideally suited to locations where keeping out heat, glare and damaging UV rays are a priority. Just like having sunglasses on your home.



**Solar Comfort™** is the perfect choice for keeping comfortable temperatures all year round, despite the outside extremes. Spend less on heating and cooling your home and help the environment.



**Sound Smart™** is a system that reduces external noise. By simply installing the right window and door system, you can 'turn down' the sound to far more comfortable levels.



**Solar Secure™** is approximately 20 times harder to break through than ordinary glass, making it an ideal invisible and economical home security barrier.



**Solar Sound n Secure™** offers comfort, safety and acoustic high performance in one window. Ideal for residential, high rise and commercial applications.

enhanced living